

Plane Crashes and Conspiracy Theories

Bass & Drums

Rafal Sarnecki

even 8ths ♩ = 110

NO DRUMS

Musical notation for the first system (measures 1-8). Chords: B^bma7, C, D^b-, A^bsus7, Ama7, A^b-/B, Amaj7/C[#], A^b/C.

DRUMS ENTER

Musical notation for the second system (measures 9-25). Chords: B-7, F[#]-ma7/A, F[#]-/A, A^b-7, Gma7, F[#]-7, Fma7#9 E/F, E^bma7#5, Ama7#5, E^bma7#5, Ema7#5, B^bma7, C, D^b-, A^bsus7, Ama7, A^b-/B, Amaj7/C[#], A^b/C, B-7, F[#]-ma7/A, F[#]-/A, A^b-7, Gma7#9#11, B-6/F[#], D-/F, E-7, D⁶, Cma7#11, Asus7, Ama7#5, Asus7, E/F, F[#]-7b6, D⁶, C[#]-7b6.

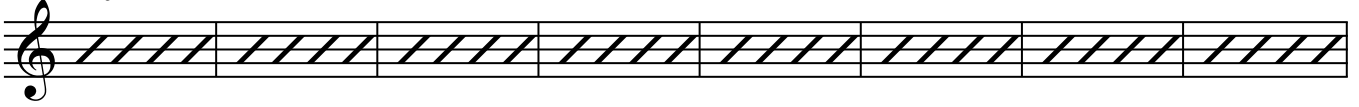
♩ = 250 LATIN

Musical notation for the third system (measures 26-48). Chords: Bsus7add3, Gmaj7#5/B, Amaj7#5/B, Gmaj7#5/B, E^b/A, B^bmaj7add2/A.

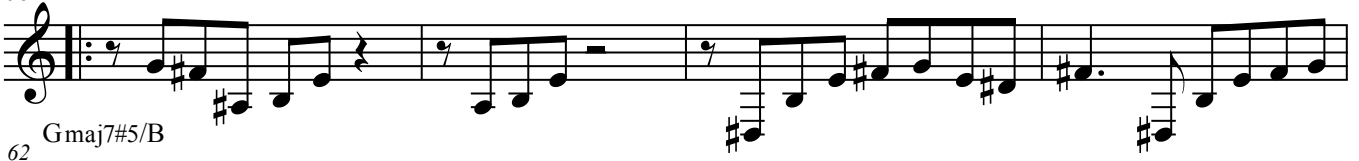
Plane crashes and conspiracy theories

50 A^bmaj7#5

C/F#



58 B^{sus}7add3



62 Gmaj7#5/B



66 A^bmaj7#5/B



70 Gmaj7#5/B



74 E^b/A



B^bmaj7add2/A



82 A^bmaj7#5



86 1. C/F#



90



94 2. C/F#



98 A-7b6



Plane crashes and conspiracy theories

102 A^bmaj7#11 G/A^b

DRUM SOLO

don't play until cue

108 D-7b6 Asus/G# C-13 C-maj9/E^b Gsus/F# C#-13 C-9b6 A maj7/F

116 G^bmaj7#5 Asus/G# C-13 C-maj9/E^b Gsus/F# C#-sus7 F-13 Dmaj9/F# repeat until cue

♩ = 100 (slower than half time)

NO DRUMS

124 G-7 A-7 B^bma7#11 E^b-6/G^b C°7 G-/B^b A-7b5 /E^b B^b-7/D^b D^b-ma7/E

128 C-/E^b D^b-13 A^b-/B A^b/A D^b-/E E°7 F-7b6 D^b9 C-7b6 B-13

132 B^b-7 C-7 D^bma7b5 G-7b6 G^bma7#11 F-7b6 D^b9 C-7b6 DRUMS ENTER

♩ = 250 LATIN

136 B^bsus7add3 G^bmaj7#5/B^b

144 A^bmaj7#5/B^b G^bmaj7#5/B^b

152 D/A^b A maj7add2/A^b

160 Gmaj7#5 B/F repeat until cue

168 A^b-7b6 Gmaj7#11 F#/G

Plane crashes and conspiracy theories

TENOR SOLO - DON'T PLAY UNTIL CUE

178 C#-7b6 A^bsus/G B-13 B-maj9/D F#sus/F C-13 B-9b6 A^bmaj7/E

186 Fmaj7#5 A^bsus/G B-13 B-maj9/D F#sus/F C-sus7 E-13 D^bmaj9/F

on cue - double time

NO DRUMS!

♩ = 110

194 G-7 A-7 B^bma7#11 E^b-6/G^b E^b°7

197 C⁶ G-ma7/B^b A-7b5 A^bma7 G-7 G^bma7#9

200 Ema7#5 B^bma7#5 C-7b6 Dsus13 C-9b6 E^bma7#5 F-76 F#-7b6

204 E^bma7no3/A^b B^b7sus10 C-7b6 B^b/D F-7sus E-9 E^bsus7 B^b/B

DRUMS ENTER:

208 B^bsus9 B^bma7#5 C-7b6 Dsus13 C-9b6 E^bma7#5 F-76 F#-7b6

212 E^bma7no3/A^b B^b7sus10 C-7b6 B^b/D F-7sus E-9 E^bsus7 B^b/B

216 B^bsus9 B^bma7#5 C-7b6 Dsus13 C-9b6 E^bma7#5 F-76 F#-7b6

220 E^bma7no3/A^b B^b7sus10 C-7b6 B^b/D F-7sus F/G^b G-7b6 E^b9 D-7b6 Csus3

224 C-7b6 A^b6 G-7b6 G^bma7#5